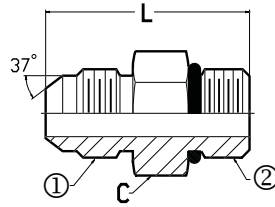


O-Ring Boss Fittings

PRESSURE CONNECTIONS CORP.

6400

Straight Thread Connector
Male JIC x Male ORB



SAE 070120

Ref. Aeroquip 202702
Ref. Parker F50X / 0503
Ref. Weatherhead C5315

6400-①-② ①-MJ ②-MB	Tube O.D.	① Male JIC	② Male ORB	C Hex	L Length	Operating Pressure
6400-02-02	1/8	5/16 - 24	5/16 - 24	7/16	1.06	7,500
6400-03-03	3/16	3/8 - 24	3/8 - 24	1/2	1.10	7,500
6400-04-02	1/4	7/16 - 20	5/16 - 24	9/16	1.17	7,500
6400-04-03	1/4	7/16 - 20	3/8 - 24	9/16	1.17	7,500
6400-04-04	1/4	7/16 - 20	7/16 - 20	9/16	1.23	7,500
6400-04-05	1/4	7/16 - 20	1/2 - 20	5/8	1.23	6,000
6400-04-06	1/4	7/16 - 20	9/16 - 18	11/16	1.29	6,000
6400-04-08	1/4	7/16 - 20	3/4 - 16	7/8	1.37	6,000
6400-04-10	1/4	7/16 - 20	7/8 - 14	1"	1.49	5,000
6400-04-12	1/4	7/16 - 20	1 1/16 - 12	1 1/4	1.66	5,000
6400-05-04	5/16	1/2 - 20	7/16 - 20	9/16	1.23	6,000
6400-05-05	5/16	1/2 - 20	1/2 - 20	5/8	1.23	6,000
6400-05-06	5/16	1/2 - 20	9/16 - 18	11/16	1.27	6,000
6400-05-08	5/16	1/2 - 20	3/4 - 16	7/8	1.37	6,000
6400-05-10	5/16	1/2 - 20	7/8 - 14	1"	1.49	5,000
6400-06-04	3/8	9/16 - 18	7/16 - 20	5/8	1.27	6,000
6400-06-05	3/8	9/16 - 18	1/2 - 20	5/8	1.27	6,000
6400-06-06	3/8	9/16 - 18	9/16 - 18	11/16	1.30	6,000
6400-06-08	3/8	9/16 - 18	3/4 - 16	7/8	1.38	6,000
6400-06-10	3/8	9/16 - 18	7/8 - 14	1"	1.50	5,000
6400-06-12	3/8	9/16 - 18	1 1/16 - 12	1 1/4	1.66	5,000
6400-06-16	3/8	9/16 - 18	1 5/16 - 12	1 1/2	1.68	4,500
6400-08-04	1/2	3/4 - 16	7/16 - 20	13/16	1.49	6,000
6400-08-05	1/2	3/4 - 16	1/2 - 20	13/16	1.49	6,000
6400-08-06	1/2	3/4 - 16	9/16 - 18	13/16	1.44	6,000
6400-08-08	1/2	3/4 - 16	3/4 - 16	7/8	1.48	6,000
6400-08-10	1/2	3/4 - 16	7/8 - 14	1"	1.60	5,000
6400-08-12	1/2	3/4 - 16	1 1/16 - 12	1 1/4	1.76	5,000
6400-08-16	1/2	3/4 - 16	1 5/16 - 12	1 1/2	1.79	4,500
6400-10-06	5/8	7/8 - 14	9/16 - 18	15/16	1.71	5,000
6400-10-08	5/8	7/8 - 14	3/4 - 16	15/16	1.64	5,000
6400-10-10	5/8	7/8 - 14	7/8 - 14	1"	1.70	5,000
6400-10-12	5/8	7/8 - 14	1 1/16 - 12	1 1/4	1.86	5,000
6400-10-14	5/8	7/8 - 14	1 3/16 - 12	1 3/8	1.86	5,000
6400-10-16	5/8	7/8 - 14	1 5/16 - 12	1 1/2	1.89	4,500
6400-10-20	5/8	7/8 - 14	1 5/8 - 12	1 7/8	2.08	4,000
6400-12-06	3/4	1 1/16 - 12	9/16 - 18	1 1/4	1.86	5,000
6400-12-08	3/4	1 1/16 - 12	3/4 - 16	1 1/8	1.94	5,000
6400-12-10	3/4	1 1/16 - 12	7/8 - 14	1 1/8	1.88	5,000
6400-12-12	3/4	1 1/16 - 12	1 1/16 - 12	1 1/4	1.97	5,000
6400-12-14	3/4	1 1/16 - 12	1 3/16 - 12	1 3/8	1.96	5,000
6400-12-16	3/4	1 1/16 - 12	1 5/16 - 12	1 1/2	1.99	4,500
6400-12-20	3/4	1 1/16 - 12	1 5/8 - 12	1 7/8	2.08	4,000
6400-14-12	7/8	1 3/16 - 12	1 1/16 - 12	1 1/4	1.99	5,000
6400-14-14	7/8	1 3/16 - 12	1 3/16 - 12	1 3/8	1.99	5,000
6400-14-16	7/8	1 3/16 - 12	1 5/16 - 12	1 1/2	2.02	4,500

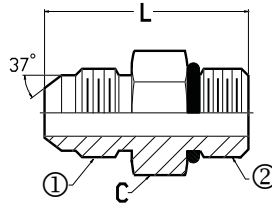
O-Ring Boss
Fittings

Continued on next page.

4:1 Safety Factor

SAE 070120

Ref. Aeroquip 202702
 Ref. Parker F50X / 0503
 Ref. Weatherhead C5315



6400
Straight Thread Connector
 Male JIC x Male ORB

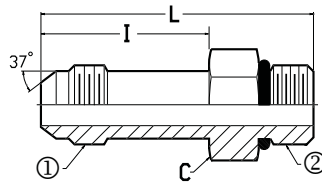
Continued from previous page.

6400-①-② ①-MJ ②-MB	Tube O.D.	① Male JIC	② Male ORB	C Hex	L Length	Operating Pressure
6400-16-08	1"	1 5/16 - 12	3/4 - 16	1 3/8	2.01	4,500
6400-16-10	1"	1 5/16 - 12	7/8 - 14	1 3/8	2.07	4,500
6400-16-12	1"	1 5/16 - 12	1 1/16 - 12	1 3/8	2.04	4,500
6400-16-14	1"	1 5/16 - 12	1 3/16 - 12	1 3/8	2.04	4,500
6400-16-16	1"	1 5/16 - 12	1 5/16 - 12	1 1/2	2.04	4,500
6400-16-20	1"	1 5/16 - 12	1 5/8 - 12	1 7/8	2.12	3,000
6400-16-24	1"	1 5/16 - 12	1 7/8 - 12	2 1/8	2.20	4,000
6400-20-10	1 1/4	1 5/8 - 12	7/8 - 14	1 11/16	2.20	4,000
6400-20-12	1 1/4	1 5/8 - 12	1 1/16 - 12	1 11/16	2.30	4,000
6400-20-16	1 1/4	1 5/8 - 12	1 5/16 - 12	1 11/16	2.33	4,000
6400-20-20	1 1/4	1 5/8 - 12	1 5/8 - 12	1 7/8	2.17	4,000
6400-20-24	1 1/4	1 5/8 - 12	1 7/8 - 12	2 1/8	2.24	3,000
6400-24-16	1 1/2	1 7/8 - 12	1 5/16 - 12	2"	2.53	3,000
6400-24-20	1 1/2	1 7/8 - 12	1 5/8 - 12	2"	2.53	3,000
6400-24-24	1 1/2	1 7/8 - 12	1 7/8 - 12	2 1/8	2.37	3,000
6400-24-32	1 1/2	1 7/8 - 12	2 1/2 - 12	2 3/4	2.53	2,000
6400-32-24	2"	2 1/2 - 12	1 7/8 - 12	2 5/8	2.74	2,000
6400-32-32	2"	2 1/2 - 12	2 1/2 - 12	2 3/4	2.78	2,000

4:1 Safety Factor

SAE 071720

Ref. Aeroquip 202713
 Ref. Parker FF50X / 5E03
 Ref. Weatherhead C5316



6400L
Straight Thread Connector Long
 Male JIC x Male ORB

6400L-①-② ①-MJ ②-MB	Tube O.D.	① Male JIC	② Male ORB	C Hex	I Length	L Length	Operating Pressure
6400L-04-04	1/4	7/16 - 20	7/16 - 20	9/16	1.39	2.08	7,500
6400L-05-05	5/16	1/2 - 20	1/2 - 20	5/8	1.45	2.14	6,000
6400L-06-06	3/8	9/16 - 18	9/16 - 18	11/16	1.56	2.31	6,000
6400L-06-08	3/8	9/16 - 18	3/4 - 16	7/8	1.82	2.60	6,000
6400L-08-08	1/2	3/4 - 16	3/4 - 16	7/8	1.88	2.70	6,000
6400L-10-10	5/8	7/8 - 14	7/8 - 14	1"	2.09	3.04	5,000
6400L-12-12	3/4	1 1/16 - 12	1 1/16 - 12	1 1/4	2.50	3.61	5,000
6400L-14-14	7/8	1 3/16 - 12	1 3/16 - 12	1 3/8	2.69	3.80	4,500
6400L-16-16	1"	1 5/16 - 12	1 5/16 - 12	1 1/2	2.84	3.98	4,000
6400L-20-20	1 1/4	1 5/8 - 12	1 5/8 - 12	1 7/8	3.47	4.69	3,000
6400L-24-24	2"	1 7/8 - 12	1 7/8 - 12	2 1/8	---	5.17	3,000

4:1 Safety Factor